

# **!Puzzler** **Collection**

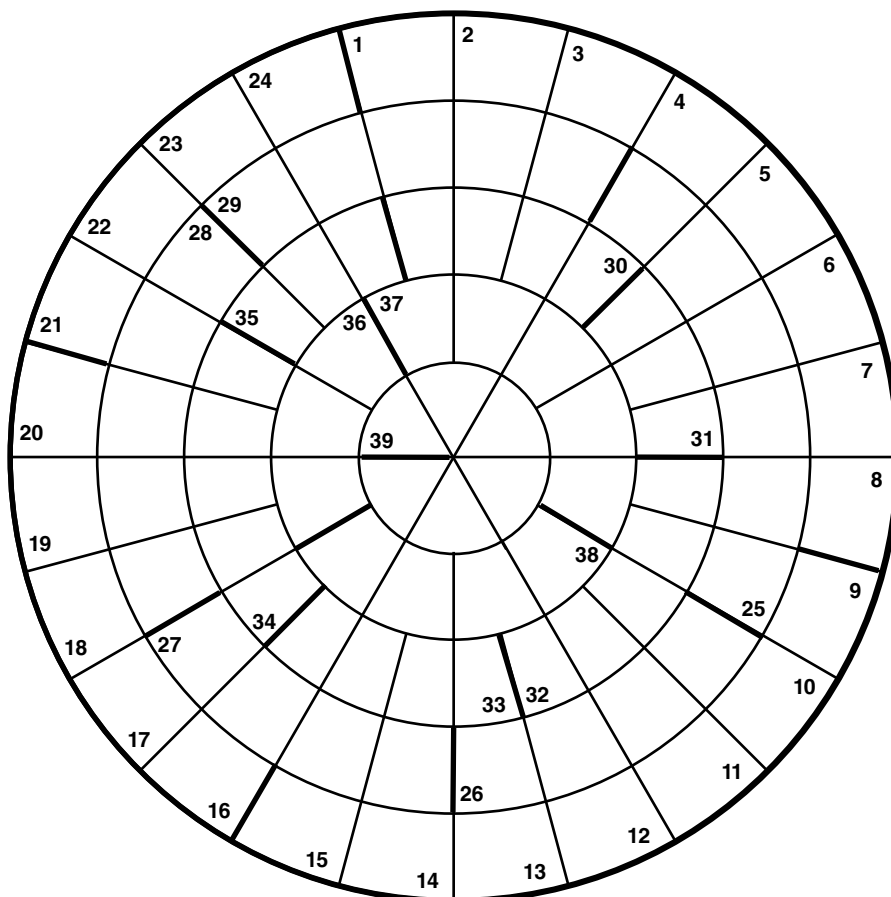
**Please enjoy these sample pages from  
Puzzler Collection.**

**A subscription to Puzzler Collection  
is the best way to ensure you never miss  
this brilliant magazine, delivered  
direct to your door!**



# Roundabout

Solutions to Radial clues (1 to 24) either start from the outer edge of the circle and read inwards, or start from the inner ring and read outwards to the edge (so they are all five-letter words). Solutions to Circular clues read in either a clockwise or an anti-clockwise direction round the circle.



## RADIAL:

### INWARDS

- 1 Royal dog
- 3 New Zealand aborigine
- 4 Mistake
- 5 Male singer
- 7 Echo-locating system
- 9 Racing driver, Ayrton
- 11 Irish police force
- 13 Head of an abbey
- 16 Squad of professionals
- 17 Well-informed
- 19 Able to move quickly
- 23 Provide with kit
- 24 Mushrooms, etc

### OUTWARDS

- 2 Furious
- 6 Lift up

8 Very cross

10 Love deeply

12 Tall building

14 Biting organ

15 Gin mixer

18 Of greater age

20 Sewn fold

21 Ornamental feather

22 Lark-like bird

### CIRCULAR:

#### CLOCKWISE

- 1 Burial ground
- 16 Gold measure
- 29 Fixed portion
- 33 007's surname
- 34 French 'goodbye'
- 35 Wordplay
- 37 Complain, grumble

38 Hinged opening

39 Buccaneer

### ANTI-CLOCKWISE

- 15 Formally accuses
- 24 Garden party
- 25 Rubber
- 26 Carry
- 27 Serve at table
- 28 Reflection
- 30 Lion's noise
- 31 Loud noise
- 32 Incorrect
- 36 Unwell



# Dilemma

Two straight crosswords — but their clues have been mixed up.

You have to decide which clue belongs to which pattern, but two words have been entered to give you a start.

### ACROSS

- |                         |                          |
|-------------------------|--------------------------|
| 1 Dotty game tile       | 1 Uncomplicated          |
| 5 Unmarried             | 5 Picnic basket          |
| 9 Artist's stand        | 9 Command                |
| 10 Evaluate             | 10 POW camp              |
| 11 Marine mammal        | 11 Winner                |
| 12 Greek underworld     | 12 Number of deadly sins |
| 14 Told fibs            | 14 Always                |
| 17 And not              | 17 Parent                |
| 18 Parsimonious         | 18 Dutch cheese          |
| 20 White heron          | 20 Tracking device       |
| 22 Vividly shocking     | 22 Long note             |
| 23 Resting place        | 23 Animal doctor         |
| 24 Crisp lettuce        | 24 Take to court         |
| 25 Bulgarian capital    | 25 Healed                |
| 28 Bathroom fitment     | 28 Fragment              |
| 31 Upper body part      | 31 Otter's home          |
| 32 ___ Peake, astronaut | 32 Farm animal           |
| 34 Secret cipher        | 34 Food fish             |
| 35 Shine                | 35 Manservant            |
| 37 Conundrum            | 37 Marvel                |
| 38 Main meal            | 38 Hot spice             |
| 39 Ancient Italian      | 39 Enthusiastic          |
| 40 Bountiful            | 40 Warm again            |
| 41 Gained knowledge     | 41 Think logically       |

1		2		3	4		5	6		7		8
				9								
10							11					
				12		13						
14	15		16		17				18		19	
20				21				22				
			23				24					
25		26				27		28		29		30
31					32		33		34			
				35				36				
37	R	I	D	D	L	E		38				
					39							
40								41				

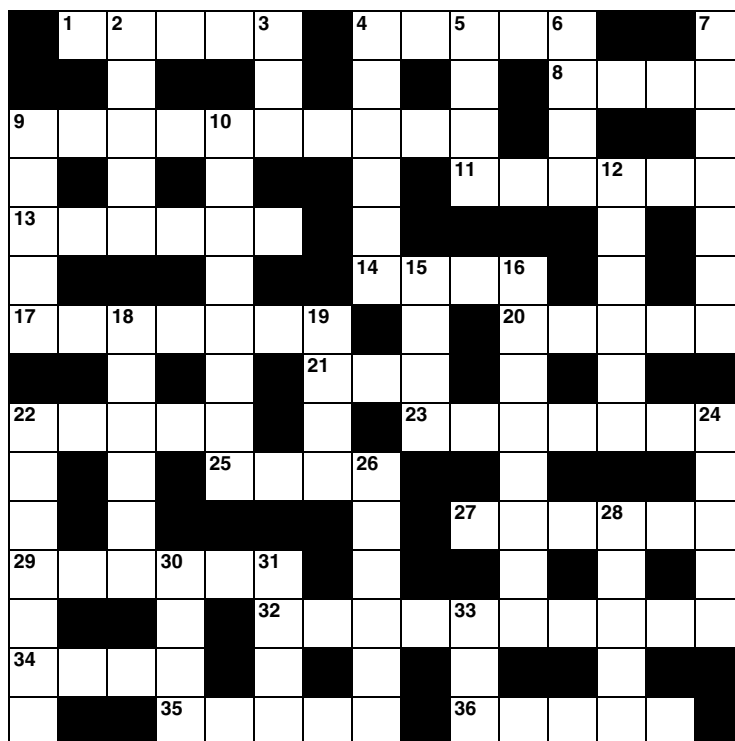
### DOWN

- |                        |                           |
|------------------------|---------------------------|
| 1 Horse's home         | 1 Cleaning cloth          |
| 2 Complained           | 2 Skilled person          |
| 3 Biblical ark builder | 3 Fewer                   |
| 4 Relieved             | 4 Church instrument       |
| 5 Chopped              | 5 Cut off                 |
| 6 Part of the eye      | 6 ___Titchmarsh, gardener |
| 7 Procession           | 7 Collect together        |
| 8 Commission           | 8 Start again             |
| 13 Delivery vehicle    | 13 Female deer            |
| 15 Snow house          | 15 Imprecise              |
| 16 Outgoing payment    | 16 Ranted                 |
| 18 Melodic sounds      | 18 Build                  |
| 19 Of a bird           | 19 Helped                 |
| 21 Hot drink           | 21 Primary colour         |
| 22 Public vehicle      | 22 Throw                  |
| 25 Little angel        | 25 Fall of rain           |
| 26 Haphazard           | 26 Shrink from            |
| 27 Lubricate           | 27 Misery                 |
| 29 Evades              | 29 Athlete                |
| 30 Colourful bird      | 30 Iranian capital        |
| 32 Unobstructed        | 32 Fortune telling cards  |
| 33 Bravery award       | 33 Bet                    |
| 35 TV detective        | 35 Merriment              |
| 36 Bog                 | 36 Fork prong             |

1		2		3	4		5	6		7		8
				9								
10							11					
				12		13						
14	15		16		17				18		19	
20				21				22				
			23				24					
25		26				27		28		29		30
31					32		33		34			
				35				36				
37	W	O	N	D	E	R		38				
					39							
40								41				

# Missing Links

The answer to each clue is a word which has a link with each of the three words listed. This word may come at the end (eg HEAD linked with BEACH, BIG and HAMMER), at the beginning (eg BLACK linked with BEAUTY, BOARD and JACK) or a mixture of the two (eg STONE linked with HAIL, LIME and WALL).



## ACROSS

- 1 BOY • MASTER • TALENT
- 4 ADDRESS • DESIGNER • LUGGAGE
- 8 LUNG • MARINE • PLANE
- 9 HEART • KIDNEY • LIVER
- 11 BREATH • LIBERTIES • PAINS
- 13 BLACK • ECONOMY • TRADER
- 14 ASSISTANT • CHIP • FLOOR
- 17 DENTAL • GRAMOPHONE • PUBLIC
- 20 LOOK • MAN • SNAKES
- 21 BATTERY • COOP • PARTY
- 22 CHOCOLATE • CLOTHES • SONG
- 23 APPLE • SPOON • WINE
- 25 ACADEMIC • BALL • NIGHT
- 27 CHANNEL • GRASS • SPACE
- 29 CARD • CRUNCH • LIMIT
- 32 ELECTRICAL • FRENCH • WIND
- 34 CRADLE • EYES • WHISKERS
- 35 COME • CUT • LIVING
- 36 CAN • GOAT • SILLY

## DOWN

- 2 EASY • HIGH • PERSON
- 3 BIG • FLIGHT • TEN
- 4 AUTUMN • BAY • TEA
- 5 END • HEAD • WATER
- 6 MUD • SKY • SPUR
- 7 CAROUSEL • COMPARTMENT • HANDLER
- 9 OLD • OVEN • PART
- 10 COLUMN • COMMITTEE • WHEEL
- 12 INFORMATION • JOB • OUT
- 15 BAG • FACTORY • PICKED
- 16 CONTROL • OFFICE • PHOTO
- 18 CLIMATE • GEAR • LOOSE
- 19 BOAT • BUSINESS • ROOM
- 22 BLUE • BUTTERFLY • FEATHER
- 24 DEGREES • FOLD • KINGS
- 26 ADMIRAL • HALF • MANDELA
- 28 BEATER • CONTROL • SOLAR
- 30 BRAKE • COMPACT • JOCKEY
- 31 CHRISTMAS • GUM • HOUSE
- 33 EDITOR • MARINE • WAY

# Riddle-Me-Ree

My first is in *BATMAN* as well as *AVANTI*,

My second's in *FRANTIC* and also in *TOOTSIE*,

My third is in *WILT* but not in *ZULU*,

My fourth appears in *PATTON* and *XANADU*,

My fifth is in *TRON* as well as *CASINO*,

My sixth is in *SHINE* but never in *PSYCHO*,

My seventh's in *CASINO* but not in *TOPKAPI*,

My whole is a film where the ending isn't happy!

# Sum-up

C D C	£21
C	
B B D	£14
D	
C D D	£19
A	
	£20
A B C D	

Using the totals given, can you calculate the price of each typographic A, B, C and D?

# Codeword

This puzzle has no clues in the conventional sense. Instead, every different number printed in the main grid represents a different letter (with the same number always representing the same letter, of course). For example, if 8 turns out to be a 'V', you can write in V wherever a square contains 8.

We have completed a very small part of the puzzle to give you a start, but the rest is up to you.

5	25	10	18	19	15		14	23	25	18	6	15
15			25		10		23		7			7
8			11	1	10	8	15	8	9	2	18	24
9	11	1	15		23		15		8	6	15	17
R												
2		7		23	8	19	23	10		15		5
I												
18	6	11	2	18	15		25	7	2	12	25	15
C												
		16		6				23		25		
10	7	2	13	15	19		21	9	2	15	24	15
25		11		3	11	20	15	19		9		16
21	15	25	3		14		7		4	15	15	4
21		10	25	1	26	15	18	8	15	3		15
15			22		23		15		9			18
9	15	3	15	15	5		3	2	5	20	2	8

A B C D E F G H I J K L M N O P Q R S T U V W X Y Z

1	2	3	4	5	6	7	8	9	10	11	12	13	
	I							R					
14				18	19	20	21			23	24	25	26
				C									

# 4-Square

Solve these four clues and then rearrange the solutions into a sixteen-letter phrase, for which a clue is given. The two diagonals also make four-letter words.

MOLTEN ROCK

NEAR, POETICALLY

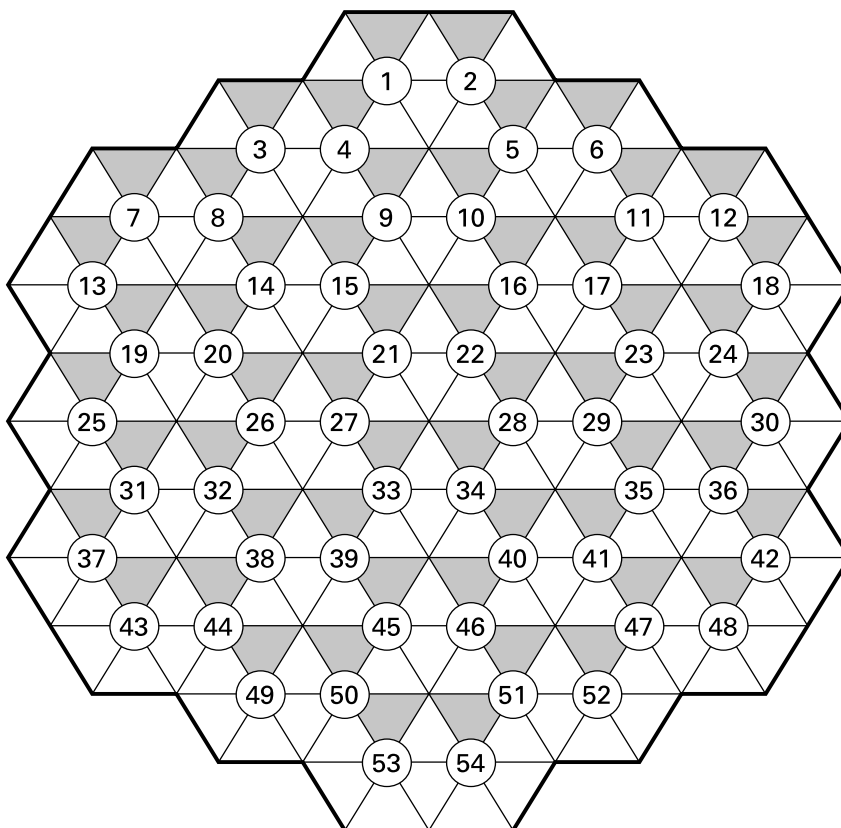
\_\_\_ COLLETTE, AUSTRALIAN ACTRESS

GENERAL SENSE


Clue: Ship's night-time lanterns (10,6)

# Honeycomb

All the answers are six-letter words. Each answer is entered in a circle around its clue-number. The first letter of the answer is entered in the shaded triangle immediately above the clue-number. If the clue-number is even, enter the answer in an anti-clockwise direction. If the clue-number is odd, enter the answer in a clockwise direction.



- |                                    |                                   |   |
|------------------------------------|-----------------------------------|---|
| 1 Savage, wild                     | 19 Endeavour                      | 38 ' ___ ___ to a bull',<br>provocation (3,3) |
| 2 Austrian capital                 | 20 Plays a guitar                 | 39 Slang for an ex-convict (3,3)              |
| 3 Toronto's country                | 21 Gaudy                          | 40 West Yorkshire moor town                   |
| 4 Horse's brisk pace               | 22 Objective                      | 41 Cinque Port                                |
| 5 Serviette                        | 23 Push forward                   | 42 Walk stealthily                            |
| 6 Type of computer                 | 24 Beat soundly                   | 43 Jane ____, novelist                        |
| 7 Manage. cope (4,2)               | 25 Commendable quality            | 44 Cleaning cloth                             |
| 8 North ____, northern US<br>state | 26 Type of shellfish              | 45 Relating to teeth                          |
| 9 Join the army                    | 27 Easter cake                    | 46 Dog's home                                 |
| 10 Fortunate (2,4)                 | 28 Breakfast food holder(3-3)     | 47 ___ Scorsese, director                     |
| 11 Reed instrument player          | 29 Summarises (4,2)               | 48 Tropical bird                              |
| 12 On the ship                     | 30 Security                       | 49 Exertion                                   |
| 13 Arid region                     | 31 Rise in opposition             | 50 Influence                                  |
| 14 Threw up in the air             | 32 Cuts off                       | 51 Regimental flag                            |
| 15 Exhaled audibly                 | 33 ___ Brando, Hollywood<br>great | 52 Six-legged creature                        |
| 16 Small sailing ship              | 34 Pungent vegetable              | 53 Wax taper                                  |
| 17 Artist's model                  | 35 Youngsters                     | 54 Mahatma ____, Indian<br>leader             |
| 18 In preference                   | 36 Limited in scope               |   |
|                                    | 37 Lent                           |   |

# BRACER

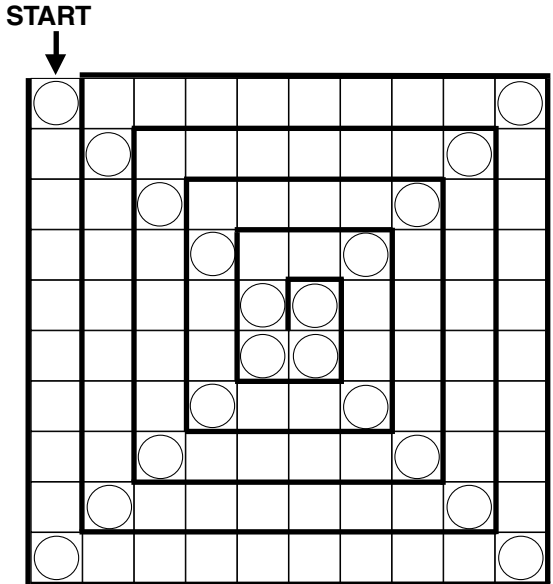
The first part of each clue gives a six-letter answer, five of whose letters make up the five-letter answer to the second part and four of which make up the four-letter answer to the third part. The unused letter from the first answer is entered in column A, and that from the second answer is entered in column B. The two columns when completed, spell out two household appliances.

	A						B						
1													
2													
3													
4													
5													
6													
7													
8													
9													
10													
11													
12													
13													

- 1 Cowardly; lifting gear; close by
- 2 Achieve; pollute; hair dye
- 3 Loan facility; attempted; ebb and flow
- 4 Destitute person; writing material; peel (fruit)
- 5 Swiss breakfast cereal; grin; slender
- 6 Interfere, meddle; become narrower; gather crops
- 7 Foundation garment; large shop; ripped
- 8 Hiker; inflict; garden-tidying tool
- 9 Concurred; category, rank; pull along
- 10 Compensated; conceit; leak slowly
- 11 Lobster claw; cost; paddy-field produce
- 12 Runs away to wed; vaulting sticks; splash over
- 13 \_\_\_ to go, enthusiastic; cereal crop; profit

# Spiral

Every answer (except the first) uses the last letter of the preceding answer as its initial letter, the chain thus formed following a spiral path to the centre of the grid. The diagonals spell out two types of educational course.



- Austria’s capital (6)
- Non-attender, truant (8)
- Defrauded (9)
- Sliding box in a cabinet (6)
- Vote seeking public opinion (10)
- 2017 Best Picture Oscar-winner (9)
- Trinidad’s neighbour (6)
- Church keyboard instrument (5)
- Storyteller (8)
- Rambler’s bags (9)
- Mouth secretion (6)
- Plentiful (8)
- Dutch flowers (6)
- Amble, stroll (7)
- Gigantic mythical bird (3)
- Card game similar to rummy (7)
- Assistance (3)



# Two for Tea

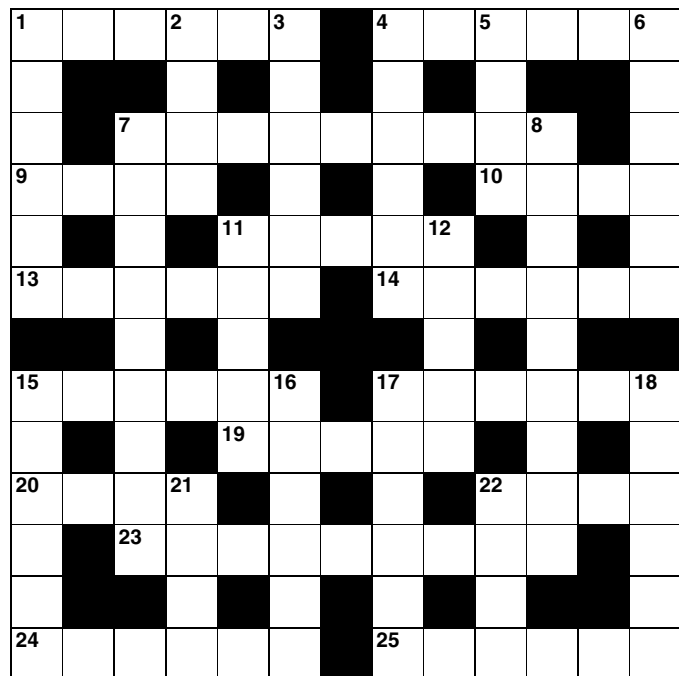
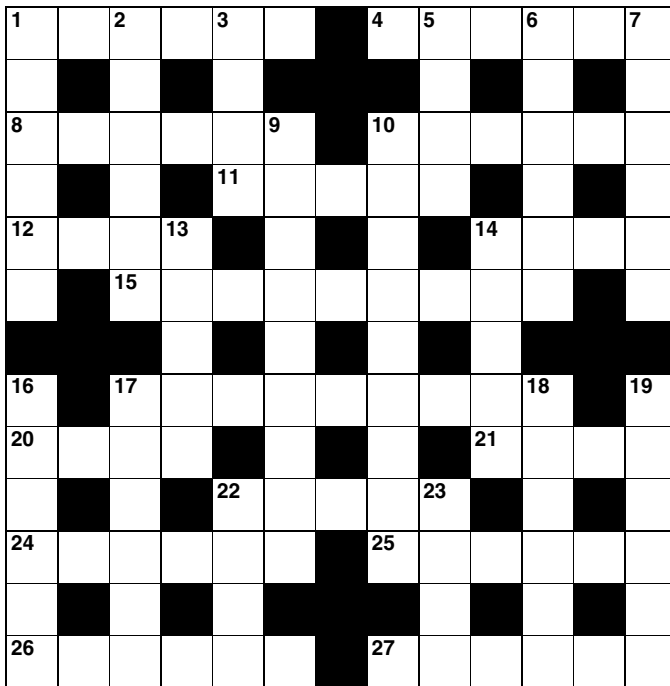
Just a couple of quickies.

## ACROSS

- 1 Append to an email
- 4 Place of refuge
- 8 Bird with a distinctive call
- 10 Quilted, upholstered
- 11 Bride's partner
- 12 Top of a building
- 14 Scottish dance
- 15 Proposer (of a candidate)
- 17 Old ocean liner
- 20 Town with a cathedral
- 21 \_\_\_ and void, invalid
- 22 Rugby skirmish
- 24 Jamaican music genre
- 25 Faulty shot in sport
- 26 Bumper car
- 27 University qualification

## DOWN

- 1 Consent, agreement
- 2 Powerful businessman
- 3 Wooden shoe
- 5 Travelled in water
- 6 Paying guest
- 7 Confused mess
- 9 Regulation
- 10 Element, symbol K
- 13 Roman numeral XL
- 14 Red-breasted songbird
- 16 Afraid, frightened
- 17 Theatrically presented
- 18 Drug dealer
- 19 Casual, carefree
- 22 Rescue from harm
- 23 Act without speaking



## ACROSS

- 1 Six-piece band
- 4 Chest, strongbox
- 7 Yoked
- 9 Sneaky look
- 10 Welsh national vegetable
- 11 Large stringed instrument
- 13 Of the skin
- 14 Wayward, roving
- 15 Candle fat
- 17 Took a swim
- 19 (Had) started
- 20 Yellow and black stinging insect
- 22 Metal money
- 23 Gullible person
- 24 Inn, pub
- 25 Not accomplished

## DOWN

- 1 Foolish, idiotic
- 2 Ambush
- 3 Christmas tree glitter
- 4 Medieval fortress
- 5 Combustible substance
- 6 Soaring firework
- 7 Unfeeling, without pity
- 8 Ten-event contest
- 11 Cocoa substitute
- 12 Vital body part
- 15 Frustrate, foil
- 16 Tool of attack
- 17 Office, department
- 18 Give charitably
- 21 Large predatory fish
- 22 Frosty

# Backwards

First, block in 37 squares in a symmetrical pattern to make a completed crossword. Next, number the squares crossword-fashion (1 to 24) allowing for words ACROSS and DOWN. Finally, put the correct numbers against the jumbled clues below.

## ACROSS

- Popular pet
- Nightclub entertainment
- Lots of
- Gardening tool
- The New World
- Scottish girl
- Steal from
- Travel over snow
- Make beer
- Constricting snake
- Posy
- Lovers' quarrel
- Parcel
- Writing implement

L	A	S	S	O	A	F	B	R	E	W
A	L	I	E	R	G	I	E	O	C	A
M	S	C	A	B	A	R	E	T	H	K
B	O	A	R	U	R	E	S	H	O	E
I	M	P	A	C	K	A	G	E	G	O
C	A	T	A	K	E	R	A	R	O	B
E	D	A	M	E	R	I	C	A	N	I
S	K	I	T	T	E	N	O	P	E	N
P	I	N	O	S	E	G	A	Y	V	A
I	W	A	F	A	L	E	R	R	E	V
T	I	F	F	R	F	E	M	A	N	Y

## DOWN

- Bringing up
- Become conscious
- Impish fairy
- Defence force
- Army officer
- Turkish commander
- Medical treatment
- Meat roasting device
- Cancelled
- Honey maker
- Water carriers
- Small ocean
- Provide weapons
- Young sheep

# Jolly Mixtures

In this puzzle, each clue is simply an anagram of the answer – but watch out! There might be more than one possible solution to each clue. For instance, the clue 'TALE' might lead to the answer 'LATE' or 'TEAL'. You'll have to look at how the answers fit into the grid to find out which alternative is correct. None of the solutions are plurals or proper nouns.

## ACROSS

- 1 SCHEMATIC
- 8 FORM
- 9 DECIDED AT
- 10 RUSE
- 13 LEAD
- 16 CROAT
- 18 OLIVE
- 19 IDEAS
- 20 A RING
- 21 RUNES
- 22 LEEK
- 25 LURE
- 28 TEASPOONS
- 29 ANNA
- 30 GET TENDER

1	2		3		4		5		6		7
							8				
9											
							10				
11		12			13	14		15			
16				17			18				
				19							
20							21				
				22	23		24				
25								26		27	
				28							
29											
				30							

## DOWN

- 2 MEAN
- 3 MIRE
- 4 RHODA
- 5 WELLS
- 6 BRASSERIE
- 7 TRADESMEN
- 11 GERMAN AIR
- 12 TRIPLANES
- 14 RAISE
- 15 NEVE
- 17 NARK
- 23 EEL OP
- 24 SEPAL
- 26 TAGS
- 27 ANNO



# Solutions

## ROUNDAABOUT

RADIAL: 1 Corgi 2 Irate 3 Maori 4 Error 5 Tenor 6 Raise 7 Radar 8 Angry 9 Senna 10 Adore 11 Garda 12 Tower 13 Abbot 14 Tooth 15 Tonic 16 Cadre 17 Aware 18 Elder 19 Agile 20 Pleat 21 Plume 22 Pipit 23 Equip 24 Fungi.  
CIRCULAR: 1 Cemetery 15 Charges 16 Carat 24 Fete 25 Eraser 26 Bear 27 Wait 28 Image 29 Quota 30 Roar 31 Din 32 Wrong 33 Bond 34 Adieu 35 Pun 36 Ill 37 Groan 38 Door 39 Pirate.

## PIECEWORD

P B A C K L I G H T D  
N O D E O R R A C E R  
T A A M A G M A G C  
M A D C A P O T R I V E T  
S O I L Y L I O N I  
B H I N D I T T W E N T Y  
I O N C O R F U I O  
N O N E I U D S P E D  
G A T H E S E T  
O P E R A A K B A N A L  
M U N I C I P A L  
C L O A K K M D E V I L  
U R T U R P S S I  
B U L K U U E T H I N  
I O B E B O P I E  
C O W B E Y A R I S E N  
C A K I N T R O T X  
L E S S E N S A C C E P T  
L T E X A L T H I  
M O L E S K E E U R O  
T D I S T E N D E D E

## DILEMMA – ‘RIDDLE’

ACROSS: 1 Domino 5 Single 9 Order 10 Stalag 11 Victor 12 Hades 14 Ever 17 Nor 18 Mean 20 Radar 22 Lurid 23 Vet 24 Cos 25 Cured 28 Bidet 31 Head 32 Cow 34 Code 35 Gleam 37 Riddle 38 Ginger 39 Eager 40 Bumper 41 Reason.  
DOWN: 1 Duster 2 Moaned 3 Noah 4 Organ 5 Sever 6 Iris 7 Gather 8 Errand 13 Doe 15 Vague 16 Raved 18 Music 19 Aided 21 Red 22 Lob 25 Cherub 26 Random 27 Woe 29 Dodges 30 Tehran 32 Clear 33 Wager 35 Glee 36 Mire.

## DILEMMA – ‘WONDER’

ACROSS: 1 Simple 5 Hamper 9 Easel 10 Assess 11 Walrus 12 Seven 14 Lied 17 Dad 18 Edam 20 Egret 22 Breve 23 Bed 24 Sue 25 Sofia 28 Scrap 31 Holt 32 Tim 34 Tuna 35 Valet 37 Wonder 38 Dinner 39 Roman 40 Reheat 41 Learnt.  
DOWN: 1 Stable 2 Master 3 Less 4 Eased 5 Hewed 6 Alan 7 Parade 8 Resume 13 Van 15 Igloo 16 Debit 18 Erect 19 Avian 21 Tea 22 Bus 25 Shower 26 Flinch 27 Oil 29 Runner 30 Parrot 32 Tarot 33 Medal 35 Vera 36 Tine.

## MISSING LINKS

ACROSS: 1 Scout 4 Label 8 Aqua 9 Transplant 11 Taking 13 Market 14 Shop 17 Records 20 Alive 21 Hen 22 Plain 23 Dessert 25 Gown 27 Hopper 29 Credit 32 Resistance 34 Cats 35 Clean 36 Billy  
DOWN: 2 Chair 3 Top 4 Leaves 5 Butt 6 Lark 7 Baggage 9 Timer 10 Steering 12 Inside 15 Hand 16 Passport 18 Change 19 Show 22 Peacock 24 Three 26 Nelson 28 Panel 30 Disc 31 Tree 33 Sub.

## RIDDLE-ME-REE

TITANIC.

## SUM-UP

A - £7; B - £4; C - £6; D - £3.

## CODEWORD

M U S C L E G A U C H E  
E U S S A N N  
T O B S T E T R I C Z  
R O B E A E T H E Y  
I N A T L A S E M  
C H O I C E U N I Q U E  
X H A U  
S N I V E L F R I E Z E  
U O D O W E L R R X  
F E U D G N P E E P  
F S U B J E C T E D E  
E K A E R C  
R E D E E M D I M W I T

B I D P M H N T R S O Q V  
G E X Y C L W F K A Z U J

## 4-SQUARE

Lava, nigh, Toni, gist: NAVIGATION LIGHTS.

## HONEYCOMB

1 Fierce 2 Vienna 3 Canada 4 Canter 5 Napkin 6 Laptop 7 Make do 8 Dakota 9 Enlist 10 In luck 11 Oboist 12 Aboard 13 Desert 14 Tossed 15 Sighed 16 Cutter 17 Sitter 18 Rather 19 Strive 20 Strums 21 Garish 22 Target 23 Thrust 24 Thrash 25 Virtue 26 Mussel 27 Simnel 28 Eggcup 29 Sums up 30 Safety 31 Revolt 32 Severs 33 Marlon 34 Garlic 35 Minors 36 Finite 37 Loaned 38 Red rag 39 Old lag 40 Ilkley 41 Romney 42 Tiptoe 43 Austen 44 Duster 45 Dental 46 Kennel 47 Martin 48 Parrot 49 Effort 50 Affect 51 Ensign 52 Insect 53 Candle 54 Gandhi.

## BRACER

1 Craven, crane, near 2 Attain, taint, tint 3 Credit, tried, tide 4 Pauper, paper, pare 5 Muesli, smile, slim 6 Tamper, taper, reap 7 Corset, store, tore 8 Walker, wreak, rake 9 Agreed, grade, drag 10 Repaid, pride, drip 11 Pincer, price, rice 12 Elopes, poles, slop 13 Raring, grain, gain.  
The two appliances are: (A) VACUUM CLEANER and (B) CARPET SWEEPER.

## SPIRAL

Vienna – absentee – embezzled – drawer – referendum – Moonlight – Tobago – organ – narrator – rucksacks – saliva – abundant – tulips – saunter – roc – canasta – aid.  
The course types are: VOCATIONAL and FOUNDATION.

## TWO FOR TEA

ACROSS: 1 Attach 4 Asylum 8 Cuckoo 10 Padded 11 Groom 12 Roof 14 Reel 15 Nominator 17 Steamship 20 City 21 Null 22 Scrum 24 Reggae 25 Mishit 26 Dodgem 27 Degree.  
DOWN: 1 Accord 2 Tycoon 3 Clog 5 Swam 6 Lodger 7 Muddle 9 Ordinance 10 Potassium 13 Forty 14 Robin 16 Scared 17 Staged 18 Pusher 19 Blithe 22 Save 23 Mime.

## TWO FOR TEA

ACROSS: 1 Sextet 4 Coffey 7 Harnessed 9 Peep 10 Leek 11 Cello 13 Dermal 14 Errant 15 Tallow 17 Bathed 19 Begun 20 Wasp 22 Coin 23 Simpleton 24 Tavern 25 Undone.  
DOWN: 1 Stupid 2 Trap 3 Tinsel 4 Castle 5 Fuel 6 Rocket 7 Heartless 8 Decathlon 11 Carob 12 Organ 15 Thwart 16 Weapon 17 Bureau 18 Donate 21 Pike 22 Cold.

## BACKWARDS

L A S S A G B R E W  
A E A E A  
M C A B A R E T K  
B O A U E E H O E  
P A C K A G E  
C A T K R A R O B  
A M E R I C A  
S K I T N P E N  
P N O S E G A Y A  
I F L R V  
T I F F L M A N Y

## JOLLY MIXTURES

ACROSS: 1 Catechism 8 From 9 Dedicated 10 User 13 Dale 16 Actor 18 Voile 19 Aside 20 Grain 21 Nurse 22 Keel 25 Rule 28 Soapstone 29 Nana 30 Detergent.  
DOWN: 2 Amen 3 Emir 4 Hoard 5 Swell 6 Brassiere 7 Smartened 11 Margarine 12 Straplaine 14 Arise 15 Even 17 Rank 23 Elope 24 Lapse 26 Stag 27 Anon.

## DOUBLE CROSS

1 Mauve, writhe 2 Amount, canal 3 Thyme, honest 4 Tire, caramel 5 Limes, marine 6 Egypt, shine 7 Bonus, tousle 8 Loaf, cuisine 9 Angel, things 10 Needle, Tudor 11 Clues, Danish

‘English humour is more subtle than American. American comedy often assumes the audience is unintelligent and we really have to spell things out.’

Matt LeBlanc